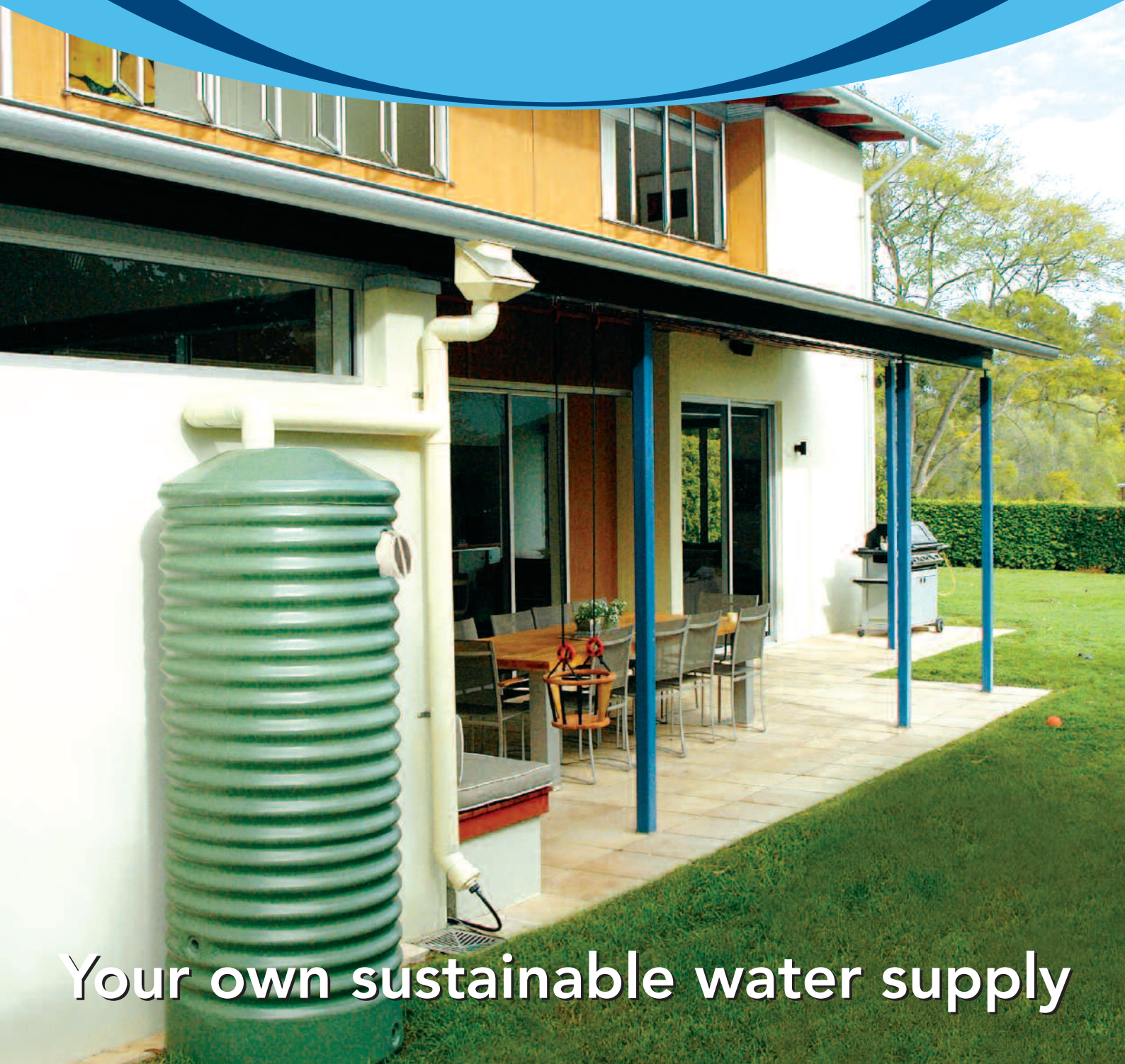


Rain  Harvesting™
www.rainharvesting.com

product. guide

USA EDITION 2010



Your own sustainable water supply

Rain Harvesting Your Own Sustainable Water Supply



Whether in drought or in bloom, **we need to find better ways of using water.**

Rain Harvesting is a manufacturer and wholesaler of sustainable water products intent on helping people build sustainable futures.

We believe it makes sense to catch pure, fresh, free rainwater from the sky, and have developed a **complete system of products for rainwater collection.** Used in conjunction with rainwater tanks/cisterns, our products help ensure rainwater harvesting systems deliver superior results.

Rainwater Harvesting involves the collection, storage and distribution of rainwater from the roof, for use inside and outside the home or business. It is a simple concept with effective results.

Safe, sustainable water. Rainwater is naturally pure and fresh. It is not recycled water. Provided certain precautions are taken, rainwater is a safe, sustainable source of water that can meet all of a household's requirements.

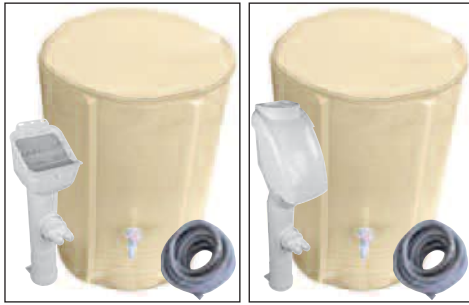
Significant cost savings – for the community and each household.

Widespread adoption of rainwater harvesting reduces our need for expensive water supply infrastructures and our dependence on dams and other water treatment and supply facilities.

We, at RAIN HARVESTING, believe that every individual, household and business has the responsibility and the capacity to help ensure the water remains a sustainable resource.

Visit www.rainharvesting.com

Water Conservation Range



Rainwater Collection Starter Kit

OR

Rainwater Collection Deluxe Kit

rainwater collection KITS

A MUST STOCK ITEM

- The easy way to start harvesting rainwater.
- All in one kit that collects, filters and stores rainwater.
- Rain Barrel is collapsible and easy to store when not required.
- Clean Rain provides minimal maintenance and cleans automatically.

Kit Includes:

- Rainwater Collection Starter Kit includes Collapsible Barrel, 16' grey water hose with tap fittings and Clean Rain Advanced downspout diverter
- Rainwater Collection Deluxe Kit includes Collapsible Barrel, 16' grey water hose with tap fittings and Clean Rain Ultra downspout diverter

| Description | Code |
|----------------------------------|--------|
| Rainwater Collection Kits | |
| Starter Kit | DDCT97 |
| Deluxe Kit | DDCT98 |



Hydro Activated Filtration™ technology. (Cover removed)



clean rain™ downspout diverter ULTRA

- The Premium Choice for Easy, High Quality Rainwater
- Break through Rain Head and First Flush Diverter technology in one easy to install product offering
- Cutting edge Rain Head technology uses the rainwater's force to deflect leaves and debris off the screen. (Hydro Activated Filtration™ technology)
- A unique sleek cover and cap provides a stylish, integrated look
- The large Leaf Slide deflects debris away from the screen

- Compact inline First Flush Diverter diverts the first flush of rainwater containing contaminants from the roof to stormwater – no additional chamber required (Smart Sense technology)
- Minimal maintenance – cleans automatically
- The Clean Rain Body swivels for convenient outlet positioning, fits standard garden, 1" Sump and 1 1/2" pool hoses and 3" pipe
- Multi-fit cap and downspout adaptors – 2x3" and 3x4", 3" and 4"
- Easily accessible on/off switch, with a safety overflow to stormwater drain

| Description | Code |
|--------------------------------------|--------|
| Clean Rain Ultra | |
| Multi Fit (2x3" and 3x4", 3" and 4") | DDCR99 |



clean rain™ downspout diverter ADVANCED

- The new Rain Head single screen technology deflects leaves and debris away from the flow of water (Clean Shield™), allowing greater flow rates and maximising collection of rainwater to the Rainwater Tank/Cistern
- The compact inline First Flush Diverter diverts the first flush of rainwater which contains contaminants from the roof to stormwater, no additional chamber required (Smart Sense technology)
- Minimal maintenance, cleans automatically

- The Clean Rain Body swivels for convenient outlet positioning, fits standard garden, 1" sump and 1 1/2" pool hoses and 3" pipe
- Multi-fit downspout adaptors – 2x3" and 3x4", 3" and 4"
- Easily accessible on/off switch
- Built in safety overflow to stormwater

| Description | Code |
|--------------------------------------|--------|
| Clean Rain Advanced | |
| Multi Fit (2x3" and 3x4", 3" and 4") | DDCR98 |



collapsible barrel™

- Catch more rainwater by using more barrels.
- Easy to connect to your downspout diverter.
- Simple to assemble with sturdy aluminum frame.
- Made from strong, flexible and wear resistant pvc.
- 60 gallon capacity.

- Suits watering cans, buckets and hoses.
- Tap fittings included.
- Collapsible and easy to store when not required.

| Description | Code |
|---------------------------|--------|
| Collapsible Barrel | |
| 60 Gallon | DDCT99 |



rain gate™ DOWNSPOUT DIVERTER

- The easy way to collect water from your downspout
- A multi fit downspout diverter that incorporates a mosquito screen
- Quick and easy to install

- Fits a wide range of hoses - garden, sump and pool hoses plus 3" pipe
- Can be used with rain barrels or rainwater tanks/cisterns

| Description | Code |
|--------------------------------------|--------|
| Rain Gate | |
| Multi Fit (2x3" and 3x4", 3" and 4") | DDRG99 |



Rain Heads, Gutter Outlets and Filter Pits



Hydro Activated Filtration™ technology.
(Cover removed)



- The Ultimate in Innovation, Design and Performance
- This Rain Head is a combination of a modern, sleek design combined with the latest Rain Head technology - the ultimate in Rain Heads
- Integrated cover and cap to compliment modern and classic architecture
- Leaf Eater Ultra™ uses the rainwater's force to deflect leaves and large debris off the screen. (Hydro Activated Filtration™ technology)
- The Leaf Slide deflects debris away from the

| Description | Code |
|-------------------------|--------|
| Leaf Eater Ultra | |
| 3" Round | RHUL99 |
| 4" Round | RHUL98 |

- screen allowing for high flow rate performance
- A single mosquito proof stainless steel mesh screen with 1/32" aperture
- Minimal maintenance required, designed to clean automatically
- Pivot the outlet to suit vertical or horizontal (rear outlet) downspouts (VH Pivot™)
- Maximises the catchment efficiency at low and high flow rates



- The Next Generation in Rain Heads
- A compact, versatile Rain Head for quick and easy DIY installations
- Single screen technology for advanced debris shedding (Clean Shield™)
- Minimal maintenance, screen automatically sheds debris

| Description | Code |
|----------------------------|--------|
| Leaf Eater Advanced | |
| 3" Round | RHAD99 |
| 4" Round | RHAD98 |

- Pivot the outlet to suit vertical or horizontal (rear outlet) downspouts (VH Pivot™)
- High flow rate performance
- Superior catchment efficiency at low and high flow rates
- A single mosquito proof stainless steel mesh screen with 1/32" aperture



- Prevents debris entering the tank which improves tank/cistern water quality and reduces maintenance
- Prevents blocked downspouts which stops the backflow of water into gutters and eaves
- Can be mid-mounted on a wall at a convenient height making them easy to access for cleaning
- Easy to paint

| Description | Code |
|-------------------|--------|
| Leaf Eater | |
| 3" Round | RHLE99 |

- Minimal maintenance
- Includes a flow directional rectangular PVC gutter outlet.
- Includes two stainless steel screens:
 - 1/4" aperture for removal of leaves and debris
 - 1/32" aperture preventing mosquitoes and vermin from entering the pipe system and rainwater tank/cistern



- Prevents debris entering the tank which improves tank/cistern water quality and reduces maintenance
- Prevents blocked downspouts which stops the backflow of water into gutters and eaves
- Compact – ideal for use under eaves
- Can be mid-mounted on a wall at a convenient height making it easier for cleaning

| Description | Code |
|---------------------|--------|
| Leaf Beater® | |
| 3" Round | RHLB99 |
| 4" Round | RHLB98 |
| 2" x 3" Rectangle | RHLB97 |

- Includes two stainless steel screens:
 - 1/4" aperture for removal of leaves and debris
 - 1/32" aperture preventing mosquitoes and vermin from entering the pipe system and rainwater tank/cistern
- Minimal maintenance
- Easy to paint



- Includes two horizontal internal stainless steel screens:
 - 1/4" aperture for leaves and debris
 - 1/32" aperture for keeping mosquitoes out
- Dual fit 3" and 4" to suit Schedule 40 PVC Pipe

| Description | Code |
|------------------------|--------|
| Rain Catcher® | |
| 3" & 4" Dual Fit Round | RHRC99 |

- Prevents debris entering the tank which improves tank/cistern water quality and reduces maintenance
- Can be mounted directly under the roof gutter or mid-mounted
- Easy to paint



Rain Heads, Gutter Outlets and Filter Pits



Leaf Eater Original Upgrade Screen

Leaf Beater® Original Upgrade Screen



LEAF EATER upgrade screen™

LEAF BEATER upgrade screen™

- Upgrade for low maintenance with superior performance
- Upgrade screens available for Leaf Eater Original and Leaf Beater® Original Rain Heads
- Single screen technology for advanced debris shedding (Clean Shield™)

- Enhances catchment efficiency by deflecting debris away from the flow of water
- A single mosquito proof stainless steel mesh screen with 1/32" aperture
- Increases flow rate performance
- Easy to install and minimal maintenance

| Description | Code |
|----------------------------|--------|
| Upgrade Screens | |
| Leaf Eater Upgrade Screen | RHAC99 |
| Leaf Beater Upgrade Screen | RHAC98 |



canale adaptor™

Canale Adaptor allows efficient collection of rainwater from canales into downspouts even in windy conditions. This downspout adaptor directs rainwater from the roof safely into a 3" or 4" piped system.

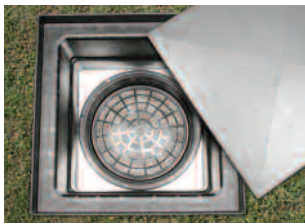
| Description | Code |
|-----------------------|--------|
| Canale Adaptor | |
| 3" & 4" Dual Fit | GSG098 |



gutter outlets™

Gutter outlets when fitted in the conventional way (from top side of gutter) are a major cause of rubbish build up and gutter rust, because a 'ridge' is created obstructing water flow out of the gutter. The Rain Harvesting 3" Gutter Outlet™ fits from the UNDERSIDE of the gutter – no obstruction, so debris and fine particles wash out.

| Description | Code |
|------------------------|--------|
| Gutter Outlets™ | |
| 3" & 4" Dual Fit | GSG099 |



filter pit™

In some instances it is not practical to fit rain heads. Filter Pits enable screening to be done at a pit which can be safer and easier to clean. Extremely beneficial when used in conjunction with underground tanks or where tanks are placed downhill from the building. Fitting a water diverter between the Filter Pit and the tank will further improve water quality.



| Description | Code |
|------------------------------|--------|
| Filter Pit™ | |
| Filter Pit 22" | TAFP01 |
| Filter Pit Junk Basket 22" | TAFP02 |
| Filter Pit 22 Riser* | TAFP03 |
| Filter Pit 27.6" | TAFP04 |
| Filter Pit Junk Basket 27.6" | TAFP05 |
| Filter Pit 27.6 Riser* | TAFP06 |

Rainwater Accessories



gain rain™
GUTTER DIVERTER

- The simple way to collect more rainwater.
- Fits inside the top of downspouts not connected to rainwater storage (barrels, tanks etc) and creates a diversion dam directing water to the downspout connected to storage.

- Easy to install and use.
- Available as a twin pack.

NOTE: In the event of high rainfall, water overflows through the centre of the downspout.

| Description | Code |
|------------------|--------|
| Gain Rain | |
| 3" Round | GSGR99 |



rainwater diverter™

- Simple D.I.Y. product.
- Quick and easy to install, one hole in your downspout (Hole saw included 1.7")
- Suits a standard garden hose or 1" sump fitting.

- Ideal for use with rain barrels, lawns, gardens and pools.
- Safety overflow to protect gutters from overflowing.

| Description | Code |
|---------------------------|--------|
| Rainwater Diverter | |
| 3" to 4" Dual Fit | DDBL99 |

First Flush Water Diverters



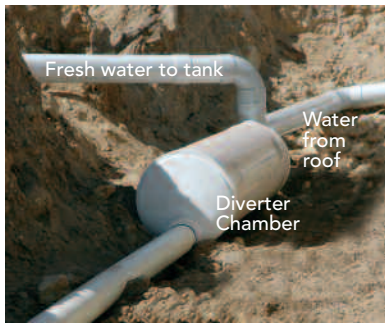
Downspout First Flush Diverter kit

First Flush Water Diverter – to fit 3" and 4" downspouts.
 A first flush water diverter (or "roof washer") takes the first flow of rainwater which may contain contaminants from the roof and gutters, seals it off and then automatically diverts the flow of cleaner water to the tank. This unique device slowly releases itself of contaminated water and resets automatically. Supplied in kit form – just add the appropriate length of pipe based on the quantity of water you wish to divert. Please refer to the Water Diverter First Flush brochure for a recommended length of pipe, this is a guide only and should be adjusted to suit the individual catchment system.

| Description | Code | Size |
|--|--------|------|
| Downspout Diverter | | |
| Downspout First Flush Water Diverter Kit | WDDS99 | 3" |
| Downspout First Flush Water Diverter Kit | WDDS98 | 4" |

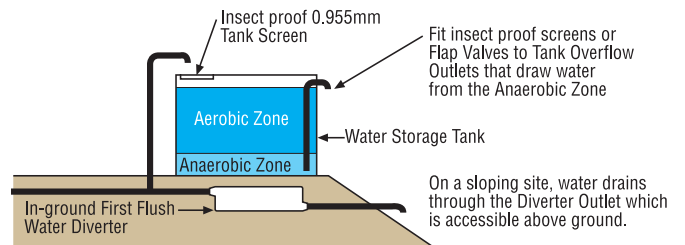


Innovative and cost saving. Allows a "wet" system to be converted into a "dry" system. There are 2 main reasons for why most systems are "wet". Firstly, due to the size of the buildings or the placement of the tank being away from the buildings, meaning, that there are long runs of pipe underground leading to a riser at the tank. Secondly, to reduce the water from freezing, water is diverted below the freezing level of the ground in areas with cold climates. On a sloping site this diverter ensures the diverted water AND the water that would normally remain in the pipes empties out. The result – a "dry" system that saves water and improves water quality requires minimum 5 degree (1:12) slope.



In-Ground Water Diverter™

| SIZES | PIPE | TOTAL |
|---------------|------|---|
| Length (Feet) | | Volume in US Gallons (approx) |
| 2 | 12 | Plus (add) the volume of water held in the pipe section downstream of the Diverter, between the Chamber and the Flow Control Valve / Outlet. For every 3 feet of 4" pipe add approximately 2 gallons. |
| 4 | 23 | |
| 6 | 35 | |
| 8 | 47 | |
| 10 | 59 | |
| 12 | 70 | |
| 14 | 82 | |
| 16 | 94 | |
| 18 | 106 | |
| 20 | 117 | |



| Description | Code | Size |
|--|--------|------|
| In-Ground Water Diverters™ | | |
| In-Ground First Flush Water Diverter Kit | WDIG99 | 12" |



First Flush Water Diverter - Post or Wall Mounted A versatile unit that can be mounted to a wall or post to divert larger volumes. Can be adapted to suit a wide range of applications and will manage single or multiple pipes coming from the roof to divert between 6 and 38 gallons. Add the appropriate length of 12" pipe based on the quantity of water you wish to divert. For example, a 78" length of 12" diameter PVC pipe is required to hold 38 gallons of diverted water. The kit is easy to freight, and the diverter volume can be made on site to match exact requirements. Includes a saddle and a galvanized steel wall mounting bracket. Please refer to the Water Diverter First Flush for a recommended length of pipe, this is a guide only and should be adjusted to suit the individual catchment system.



12" First Flush Water Diverter kits



| Description | Code | Size |
|--|--------|------|
| Post/Wall/Stand Mounted Water Diverters™ | | |
| Post/Wall Mounted First Flush Water Diverter Kit | WDPW99 | 12" |



Stainless Steel Filter provides extra confidence with additional filtration of fine sediments and pollutants to ensure the slow release control valve does not block. This ensures the diverter automatically resets itself after rainfall, to ensure high quality rainwater enters your tank.

Stainless Steel Filter

| Description | Code | Size |
|---|--------|---------------|
| Stainless Steel Filter | | |
| First Flush Water Diverter Stainless Steel Filter | WDAC02 | Universal Fit |

Tank Level Monitors



Rain Alert® brings your tank levels inside your house for convenience. A safe & easy “wireless” tank water level monitor that intermediately displays your tank level on a LCD screen that can be located up to 656 feet away from the tank at any power point in your house.

| Description | Code |
|---|--------|
| Rain Alert® | |
| Wireless Tank Level Monitor | TARA98 |
| Underground – Wireless Tank Level Monitor | TARA97 |

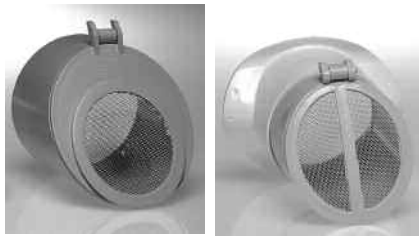


Monitoring your rainwater made easy!
The Rain Harvesting Tank Gauge is a rainwater tank level indicator which ensures you are able to tell how much water is in your tank at a glance. It is quick and

easy to install. Suitable for all vented tanks/cisterns up to 100” in height. Features an easy to read dial with “Empty” & “Full” Indicators and utilizes a reliable float system.

| Description | Code |
|--------------------|--------|
| Tank Gauge™ | |
| Tank Level Monitor | TATG02 |

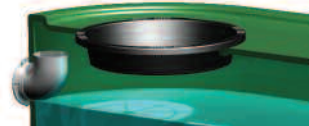
Tank Essentials



- Mozzie Stoppa™ Mosquito Insect Flap Valves are insect-proof screens that prevent vermin and insects entering the cistern/tank.
- Includes an adaptor for secure connection to the end of 4” pipes leading to and from the rainwater tank/cistern. Suitable for use with flexible coupling to fit at end of 3” downspouts or pipes.
- Double self-cleaning seal, with flaps that cannot be over-rotated and left open.
- The Flap Valves also allow a flow of air over the surface of the water which improves water quality.
- 1/32” aperture, grade 316 stainless steel.



| Description | Code |
|--|------------------|
| Mozzie Stoppa Hi-Flow Flap Valves | |
| Suitable for 3” coupling 4” | TAFV99 TAFV98 |

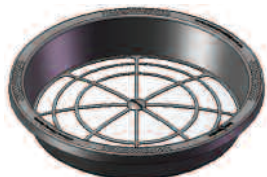


- High level Tank Overflow Outlet will add almost 5” of water to the tank/cistern before overflow.
- Mozzie Stoppa Screen incorporate a 1/32” aperture stainless steel screen moulded into a male and female PVC fitting and provides a versatile solution to insect proof the tank/cistern.
- Includes adaptor for secure connection to end of 3” or 4” pipes leading to and from the rainwater tank/cistern
- Ideal for polypropylene tank/cistern

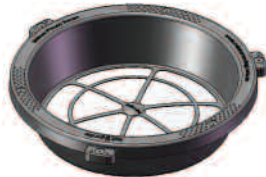


| Description | Code |
|---------------------------|------------------|
| Tank Overflow Kits | |
| 3” 4” | TAT099 TAT098 |

Tank Accessories



Standard



Fixing points



- Fitted at the rain barrel or cistern/tank entry point to keep mosquitoes, pests and leaves out.
- 316 stainless steel mesh.
- Virgin polypropylene resin.
- 10 year guarantee.
- UV & acid rain resistant.



| Description | Code |
|-----------------------|--------|
| Tank Guardian™ | |
| Standard 12” | TASS06 |
| Standard 16” | TASS07 |
| Fixing Points 12” | TASS04 |
| Fixing Points 16” | TASS05 |



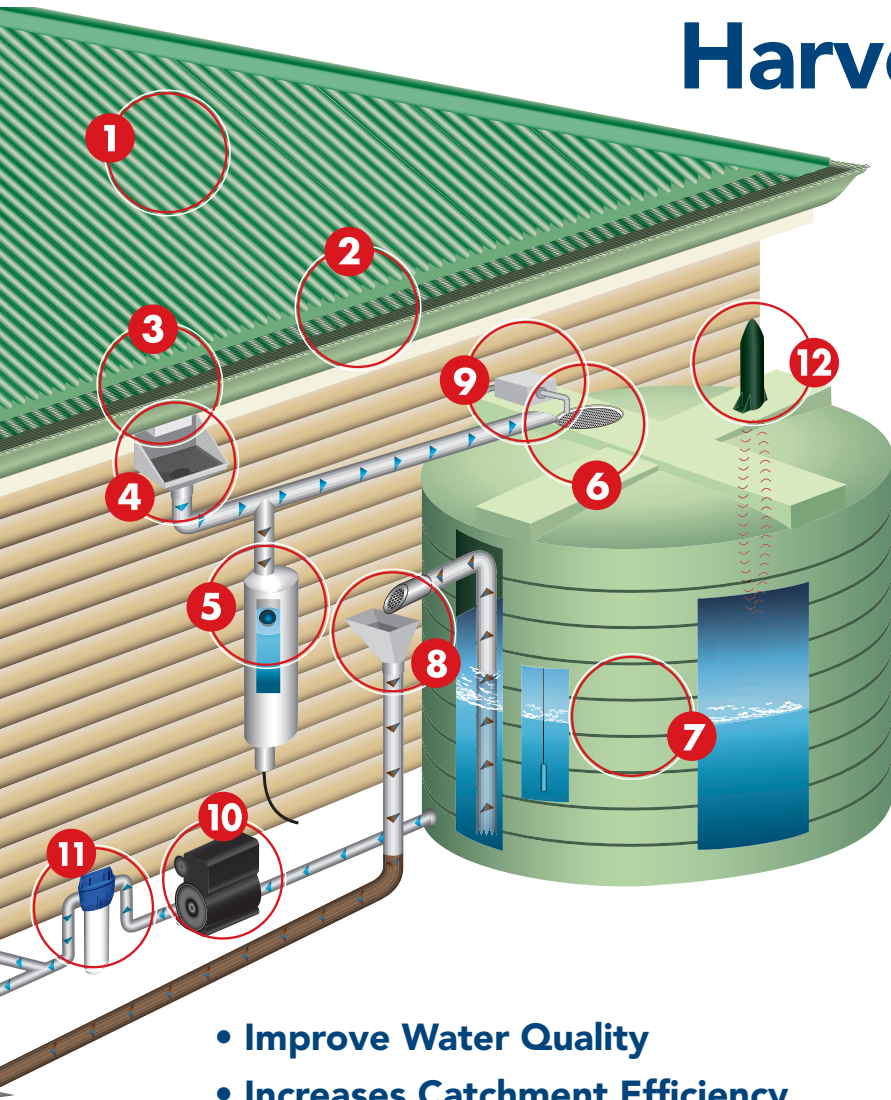
- Backflow prevention for your rainwater tank/cistern overflow
- Removable mosquito screens for easy maintenance
- Provides a visual inspection point
- Fits 3” stormwater pipes

- Easy to install
- Kit available – includes High Level Tank Overflow Outlet will add almost 5” of water to the tank/cistern before overflow. Ideal for polypropylene tank/cistern



| Description | Code |
|-----------------|------------------|
| Air Gap™ | |
| 3” Kit 3” | TAAG99 TAAG98 |

How to create the Complete Rain Harvesting System.



- Improve Water Quality
- Increases Catchment Efficiency
- Protects Pumps and Household Appliances
- Reduces Tank/Cistern Maintenance

1. Check **ROOF SURFACE** is suitable for collecting quality rainwater.
2. Install **GUTTER MESH** to prevent leaves and debris from blocking gutters.
3. Fit **GUTTER OUTLETS** from the underside of the gutter to prevent obstruction of water flow.

4. Fit Leaf Eater or Leaf Beater® **RAIN HEADS** to downspouts to prevent blocking. Rain Heads deflect leaves and debris and keep mosquitoes out of pipes that hold water.
5. Install **FIRST FLUSH WATER DIVERTER/S** (sometimes called 'roof washers') to prevent the first flush of most contaminated rainwater from entering the tank, cistern or rain barrel, or install a large diverter that can handle multiple downspouts, beside the water tank or in-ground.
6. Ensure the **TANK/CISTERN SCREEN** is installed at tank/cistern entry point to keep mosquitoes and pests out.
7. Choose a **WATER TANK, CISTERN** or **RAIN BARREL**. Consider annual rainfall, roof catchment area and water usage when determining its size.
8. Fit **INSECT PROOF SCREENS** or **FLAP VALVES** to the end of all pipes to the tank screen and to **TANK/CISTERN OVERFLOW OUTLETS** to keep mosquitoes and pests out and ensure tank/cistern is vented properly.
9. Utilize a **TANK/CISTERN 'TOP UP'** system (if required) to automatically 'top up' the tank/cistern with mains water when water levels fall to a designated minimum level.
10. Select a **PUMP SYSTEM** (if required) to distribute water for use inside or outside the home.
11. Fit a purpose designed **RAINWATER FILTER** after the pump to help reduce residual sediment, color and odour.
12. **WATER LEVEL MONITOR**. Install a level indicator to help monitor your water usage. Wireless systems are most convenient and display a reading inside the home.

Rain Harvesting[™]
www.rainharvesting.com

Developed by: Rain Harvesting Pty Ltd 1005 N Commons Drive Aurora, Illinois 60504
Ph: +1 (630) 405 - 0579 Fax: +1 (630) 851 - 7744 Email: info@rainharvesting.com

© Rain Harvesting Pty Ltd

*Consider local council requirements and have a plumber complete installation where required.

USA Customer Toll Free Number +1 (866) 506 3047