

## GRUNDFOS MQ THE COMPACT HOME WATER SUPPLY UNIT

- > Easy to select
- > Easy to install
- > Easy to operate



# Compact, all-in-one unit for your home water supply

## ➤ Easy to select

The Grundfos MQ is a compact pump and pressure boosting unit specially designed for home water supply. It is a reliable and very easy-to-operate unit that can be fitted almost anywhere. The pump is self-priming, which means that it is capable of drawing water from a well depth of down to 8 m. As the MQ has a built-in pressure tank, you do not need a space-consuming tank.

The MQ pump is also ideal for boosting pressure from elevated or sub-terrain water storage tanks or from the water mains.

## ➤ Easy to install

The Grundfos MQ pump is easy to install. The compact, horizontal design makes the pump easy to place even where space is limited. The outlet pipe connection can be angled up to 5° to fit existing pipework.

Due to the built-in pressure tank and integrated start/stop features there is no need for adjusting a separate pressure switch.

The MQ is water-cooled and therefore has no noisy cooling fan. As it is self-priming, it is not necessary to allow free space around the pump for priming.

## ➤ Easy to operate

Operation of the Grundfos MQ pump is simple and easy. Once installed it needs only a push on the "On" button to provide many years of reliable service. The actual settings are clearly indicated by indicator lights on the user-friendly control panel.

The MQ pump has a small built-in pressure tank, sufficient to ensure that water is readily available from the tap. The pump starts automatically as soon as a tap is opened and no loss of pressure is felt.

## ➤ Unique user benefits

The Grundfos MQ "anti-cycling" feature prevents the pump from continuously starting and stopping in the event of a dripping tap or minor leak in the system.

The MQ pump has built-in dry-running protection. If for any reason water is not available, the pump automatically switches off. It will subsequently attempt to re-start every half hour for up to 24 hours until water is again available.

The pump also has a built-in thermal protection. If it overheats, the pump will stop immediately. After a 30-minute cooling-down period, the pump will automatically restart.

## ➤ Corrosion-free

The Grundfos MQ pump is built for long-term, trouble-free operation. It is made of weatherproof, corrosion-resistant materials and can, if necessary, be placed outdoors.

A drain plug enables easy draining of the pump. This is especially convenient if the pump is installed in a front-risk location such as a holiday cottage. The MQ pump is suitable for rainwater and will not contaminate drinking water.

## ➤ User-friendly control panel

The Grundfos MQ features an easy-to-use control panel with indicator lights for indication of

- pump on
- auto-reset
- alarm (dry-running or overheating).

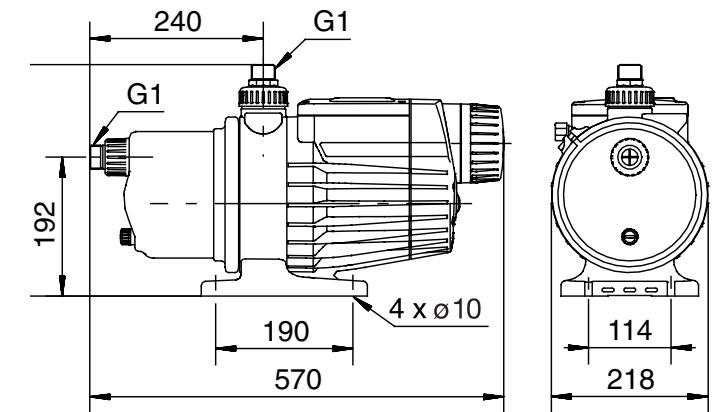
In the event of dry-running, the pump will stop and afterwards attempt to restart automatically. Restarting can also be done manually. If required, the auto-reset function can be disabled.

## Excellent user benefits

- Easy to select
- Easy to install
- Easy to operate
- Self-priming down to a depth of 8 m
- Low noise
- Anti-cycling feature
- Dry-running protection
- Thermal protection
- Corrosion-free – suitable for potable water
- User-friendly control panel
- Tough and reliable
- Space-saving – no tank required

## Use anywhere

- Private homes
- Holiday cottages
- Farms
- Greenhouses



## ➤ Dimensions and weights

| PUMP TYPE | VOLTAGE       | I <sub>n</sub> [A] | I <sub>start</sub> [A] | P <sub>2</sub> [W] | Net weight [kg] |
|-----------|---------------|--------------------|------------------------|--------------------|-----------------|
| MQ 3-35   | 1 x 220-240 V | 4.0                | 11.7                   | 550                | 13.0            |
| MQ 3-45   | 1 x 220-240 V | 4.5                | 11.7                   | 670                | 13.0            |

## ➤ Pumped liquid

Potable water, rainwater or other thin, clean, non-aggressive and non-explosive liquids without solid particles or fibres.

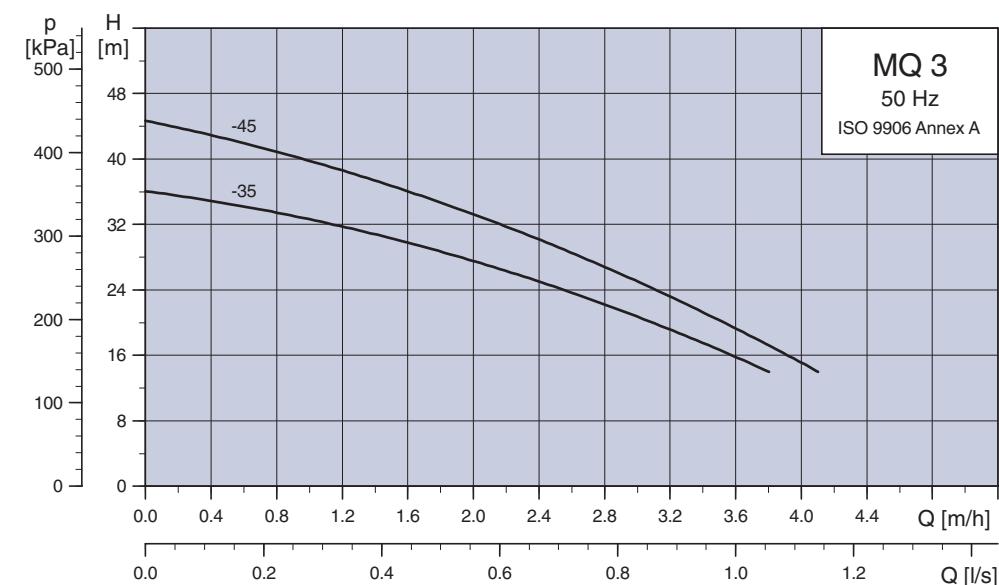
### OPERATING CONDITIONS

|                     |              |
|---------------------|--------------|
| System pressure     | max. 7.5 bar |
| Inlet pressure      | max. 3 bar   |
| Suction lift        | max. 8 m     |
| Liquid temperature  | 0°C to +35°C |
| Ambient temperature | 0°C to +45°C |

### TECHNICAL DATA

|                  |       |
|------------------|-------|
| Enclosure class  | IP 54 |
| Insulation class | B     |
| Marking          | CE    |

## Grundfos MQ Performance – 50 Hz



| FLOW [m³/h] | HEAD [m] |         |
|-------------|----------|---------|
|             | MQ 3-35  | MQ 3-45 |
| 0           | 36       | 45      |
| 0.6         | 34       | 42      |
| 1.2         | 32       | 38      |
| 1.8         | 29       | 35      |
| 2.4         | 25       | 30      |
| 3.0         | 21       | 25      |
| 3.6         | 16       | 19      |
| 4.0         | 12       | 15      |

